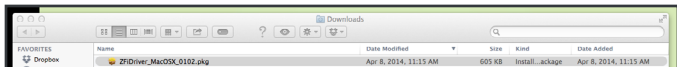
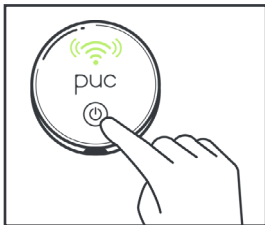


# ZFi Mac Driver Beta Installation and Connection Walk Through

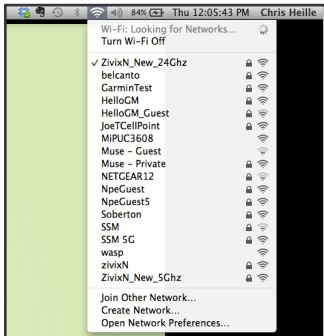
1. Download the ZFiDriver\_MacOSX.pkg file
2. Click/Open the ZFiDriver\_MacOSX\_0XXX.pkg



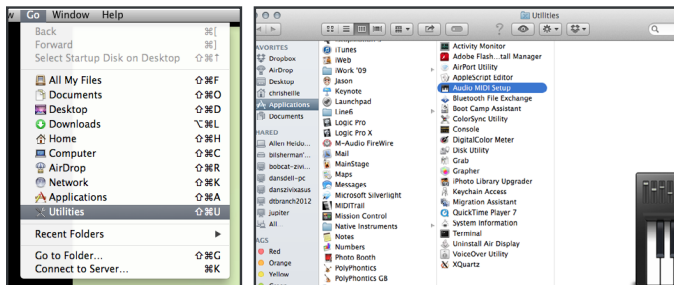
3. Follow the onscreen installer instructions.



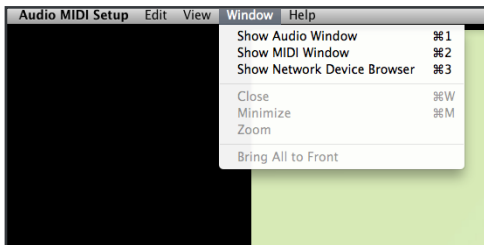
4. Turn on the PUC
5. Select "MiPUCXXXX" from the WiFi Network menu drop down



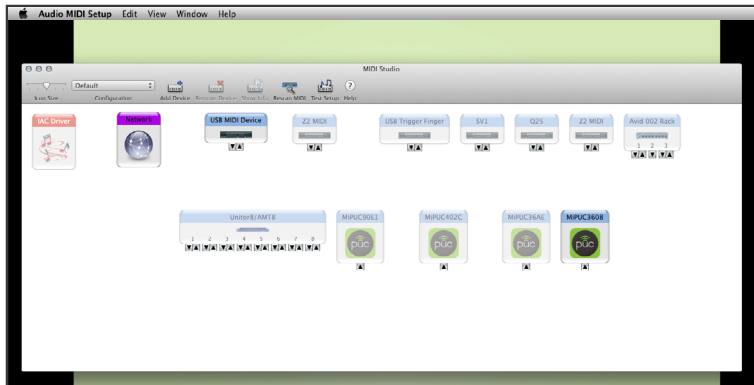
## 6. Launch Audio MIDI Setup from the “Go > Utilities folder”



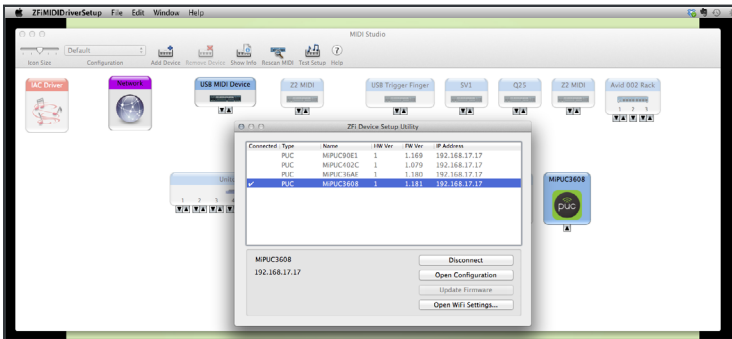
## 7. In Audio MIDI Setup, select “Show MIDI Window” from the Window drop down



8. In the MIDI Studio Window, the MiPUCXXXX will appear. It can take up to 15 - 20 seconds after launching Audio MIDI Setup for your PUC icon to appear available in the MIDI Studio window. The PUC will automatically connect via ZFi, and the PUC icon will appear solid and selectable in the MIDI Studio window indicating it is ready for use. If it doesn't automatically connect, goto the next instruction. (\*see note below if your PUC doesn't appear here after 30 seconds.)



9. Double click the MiPUCXXXX icon to launch the ZFi Device Setup Utility.
10. In ZFi Device Setup Utility, click your PUC's name to select it and click "Connect." Your PUC's WiFi LED indicator will change from flashing to solid green, indicating the PUC is connected.

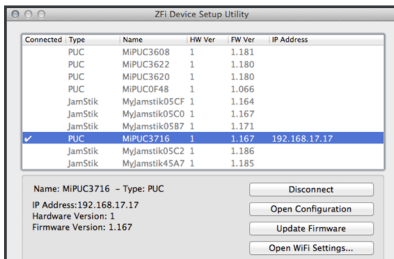


11. Your PUC is now connected and ready for use over ZFi with your Mac.
12. When your use for the PUC's MIDI connection is over, select "Disconnect" from the ZFi Device Setup Utility and power down your PUC and Quit ZFi Device Setup Utility.

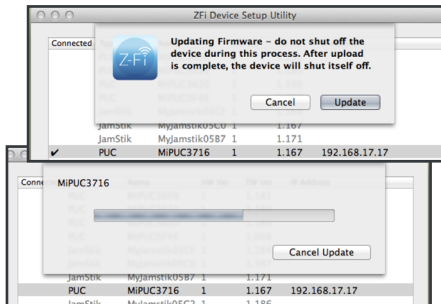
"If your PUC doesn't appear in the MIDI Studio window after 30 seconds AND you have an ethernet cable connected - disconnect your ethernet cable (and reconnect it if you need network services while your PUC is active.) In some cases you may need to "Turn WiFi Off," wait 10 seconds, and "Turn WiFi On" again to refresh the network selections as well.

# UPDATING FIRMWARE USING MAC ZFi DRIVER

1. Connect your PUC to the Mac using the ZFi protocol.



2. Once connected, double click the PUC ZFi icon in the AudioMIDI Setup>MIDI Studio to open the ZFi Device Setup Utility panel. Make sure your PUC is selected with the checkmark in the “Connected” field.



3. Click the “Update Firmware” button. The PUC’s WiFi LED will flash indicating the new firmware is being loaded.

## UPDATING FIRMWARE USING MAC ZFi DRIVER (cont.)

---



4. Once the firmware upload is completed, the ZFi Setup Utility should prompt the message above, AND the PUC's WiFi LED will turn red, then the PUC will automatically turn off. If the PUC doesn't complete this cycle, you'll need to repeat the process.

5. Power the PUC back on and reconnect to WiFi. If AudioMIDI Setup is still open the PUC will reconnect via ZFi automatically.